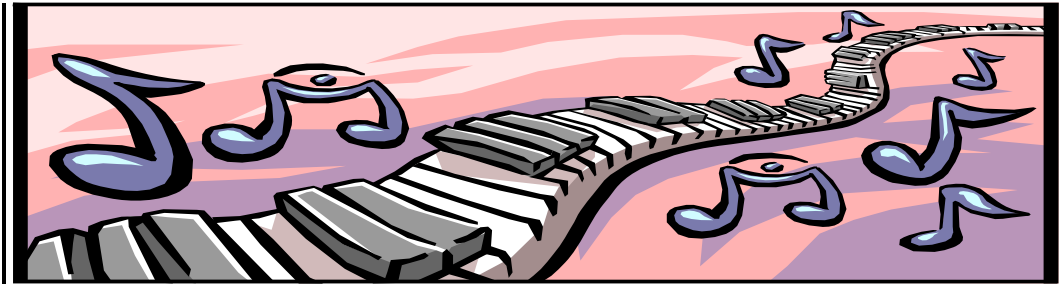


CARE OF THE PIANOS IN KRETSCHMER RECITAL HALL (KRH) Room 101



The following are guidelines for the care of the Steinway and Baldwin pianos in KRH.

1. Both pianos should always be fully closed and covered when moving.

When using the piano(s):

- a) uncover carefully
 - b) store cover in the plastic box back stage for piano covers
 - c) fold back the lid carefully to uncover the music rack
 - d) adjust the music rack
 - e) when opening the lid, the long stick should be placed in the indentation in the lid, which is farther into the piano, creating more of an angle on the stick. The short stick should be used with the indentation that is closer to the outside of the piano.
2. Only music should be placed on the piano—papers, books, backpacks, jewelry, etc. can seriously damage the finish.
 3. To avoid scratching the fallboard, large jewelry should be removed before playing the piano.
 4. Both pianos have humidifier units. Make certain that the pianos are "plugged in" and that the lights are not blinking. If a light is blinking, please inform the office staff to water the piano.
 5. If possible, avoid using the stage lights. On most occasions, i.e. lessons, practice, etc., use the adjustable lamp, which is either on stage or stored back stage.

THANK YOU FOR TAKING CARE OF THESE INSTRUMENTS!

By signing this form, the student agrees to comply with all departmental guidelines as stated in the 2007-2008 Music Students' Handbook.

Student signature _____ Date _____

Return this form to Kathy Zimmerman, AMC Administrative Assistant by: _____

